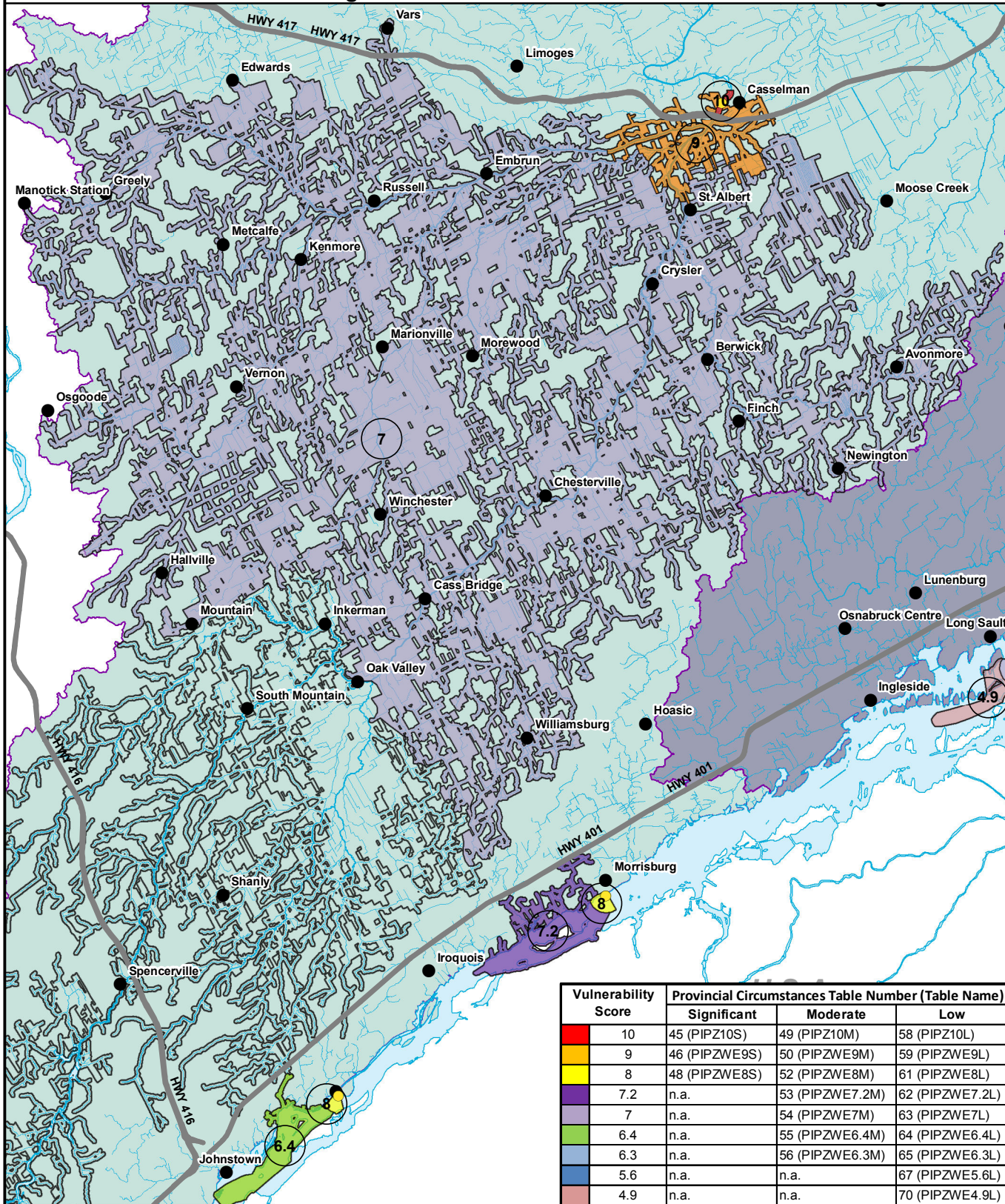


# Map 5.19.4B: Casselman Circumstance Tables for Pathogen Threats



Vulnerability Score	Provincial Circumstances Table Number (Table Name)		
	Significant	Moderate	Low
10	45 (PIPZ10S)	49 (PIPZ10M)	58 (PIPZ10L)
9	46 (PIPZE9S)	50 (PIPZE9M)	59 (PIPZE9L)
8	48 (PIPZE8S)	52 (PIPZE8M)	61 (PIPZE8L)
7.2	n.a.	53 (PIPZE7.2M)	62 (PIPZE7.2L)
7	n.a.	54 (PIPZE7M)	63 (PIPZE7L)
6.4	n.a.	55 (PIPZE6.4M)	64 (PIPZE6.4L)
6.3	n.a.	56 (PIPZE6.3M)	65 (PIPZE6.3L)
5.6	n.a.	n.a.	67 (PIPZE5.6L)
4.9	n.a.	n.a.	70 (PIPZE4.9L)

N  
W E S  
1:330,000  
(Printed ANSI A)

- Legend**
- Villages/Towns
  - Primary Roads
  - ~ Rivers and Lakes
  - ~ Raisin Region SPA
  - ~ South Nation SPA
  - Surface Water Intake

**DRINKING WATER SOURCE PROTECTION**  
DE L'EAU POTABLE À LA SOURCE

Raisin Region Conservation Authority  
Office de protection de la nature de la région Raisin

**SOUTH NATION CONSERVATION**  
DE LA NATION SUD

This map is intended to accompany the Assessment Report and may be subject to change. Please consult the local Conservation Authority for the latest version and assistance with proper interpretation.

Base data is provided by the Ontario Ministry of Natural Resources. Produced by the South Nation River Conservation Authority under license.

