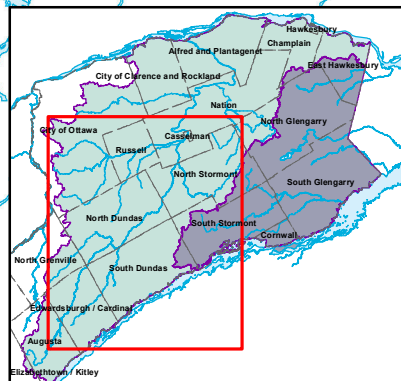
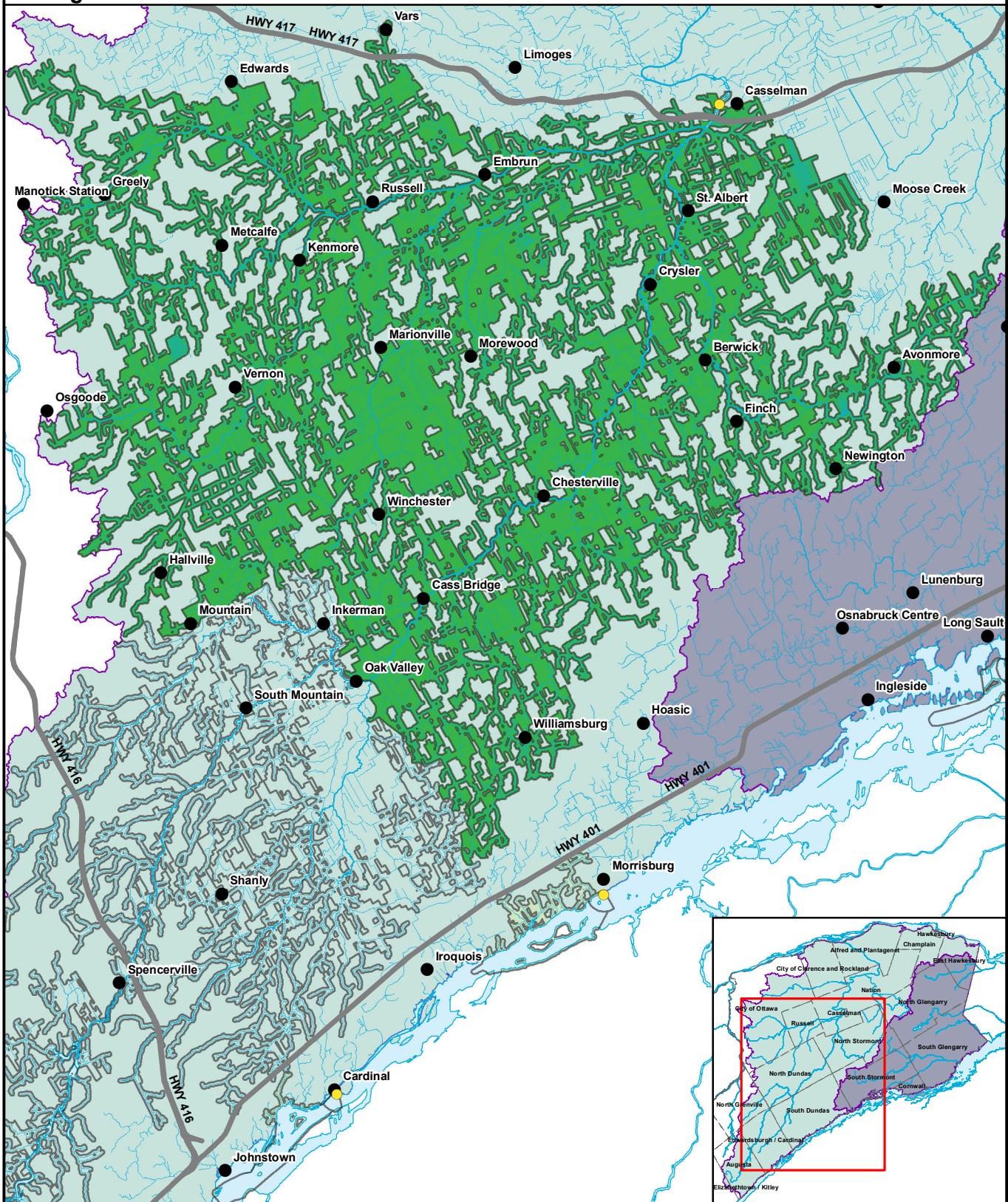


Map 5.19.5: Casselman Managed Lands

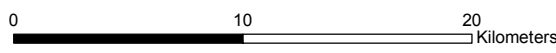


N
W E
S
1:330,000
(Printed ANSI A)

- Legend**
- Villages/Towns
 - Primary Roads
 - ~ Rivers and Lakes
 - ~ Raisin Region SPA
 - ~ South Nation SPA
 - Surface Water Intake
 - > 80 %
 - 40% - 80%
 - < 40 %

This map is intended to accompany the Assessment Report and may be subject to change. Please consult the local Conservation Authority for the latest version and assistance with proper interpretation.

Base data is provided by the Ontario Ministry of Natural Resources. Produced by the South Nation River Conservation Authority under license.



Raisin Region Conservation Authority
Office de protection de la nature de la region Raisin

SOUTH NATION CONSERVATION
DE LA NATION SUD

